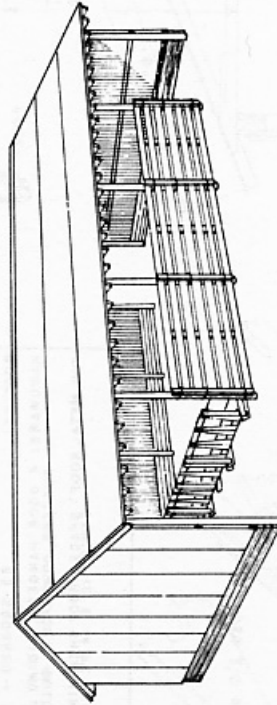
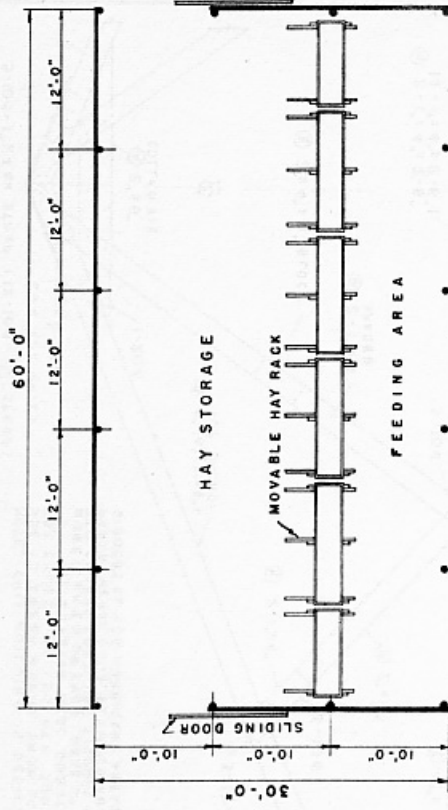


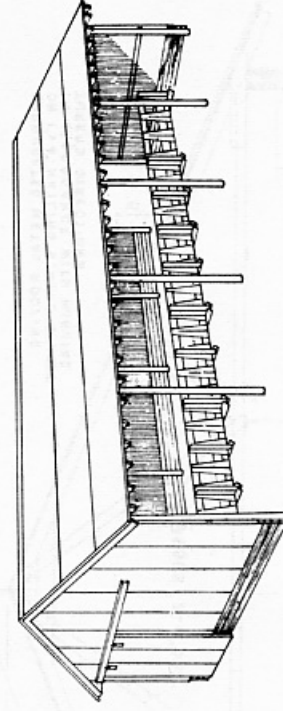
PLAN NO. 1



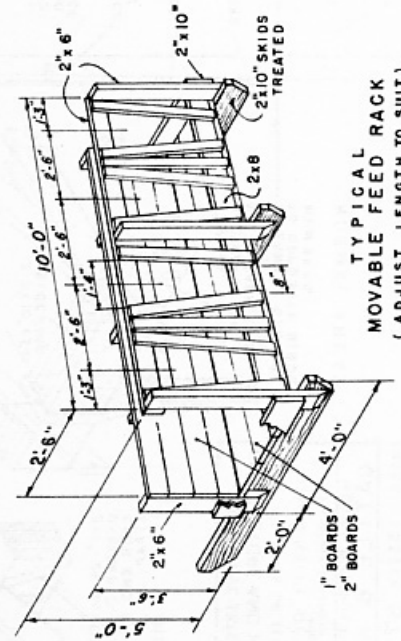
PERSPECTIVE VIEW OF PLAN NO. 1



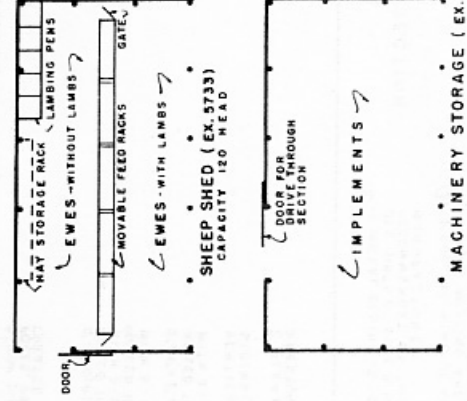
PLAN NO. 2



PERSPECTIVE VIEW OF PLAN NO. 2



TYPICAL
MOVABLE FEED RACK
(ADJUST LENGTH TO SUIT)



NOTE:-

1. CAPACITY : 24 TO 32 HEAD
2. LENGTH OF BUILDING MAY BE VARIED IN 12 FT. UNITS .
3. USE OF THE BUILDING AS SHEEP OR MACHINERY SHELTER IS ILLUSTRATED BY SMALL PLANS AT LEFT. COMPLETE PLANS FOR EITHER OF THESE TYPES OF BUILDINGS MAY BE OBTAINED - WHEN ORDERING USE THE PLAN NUMBER INDICATED.

BASED ON VIRGINIA PLAN No. K.1.25
 COOPERATIVE EXTENSION WORK IN
 AGRICULTURE AND HOME ECONOMICS
 STATE OF TENNESSEE
 UNIVERSITY OF TENNESSEE
 AND
 UNITED STATES DEPARTMENT OF AGRICULTURE COOPERATING
MULTI PURPOSE POLE BUILDING
CATTLE & HAY BARN
 USDA '55 EX-5794 SHEET 1 OF 2

