

Introduction

This directory seeks to promote contact among the brothers of Sigma Nu that were initiated at the University of Tennessee in 1966. Thirty years is a long time and a suitable milestone to use as an excuse for such a project. It is hoped that you will take some time to write or call each other to catch up on old times.

To contain the size of the project, I limited the directory to those people initiated in 1966. Many other close friends were initiated before or after us (or never initiated). I will leave recording of other years to members of those classes.

My primary source of contact has been the current address list of the national fraternity in Lexington, Virginia. Some of the unlocated brothers were tracked with national phone directories.

Please forgive me if most of the information applies to the Fall pledge class, but that is what I have.

- Bill Reed, EH732

Chapter Officers

When we joined the fraternity, these were the officers for Epsilon Eta Chapter of Sigma Nu:

- Lynn Sorrell - Commander
- John Tindall - Lt. Commander
- Mike Gritzner - Treasurer
- Gene Spencer - Recorder
- Drew Arrants - Corresponding Secretary
- Hank Stanfield - Pledge Marshall
- Larry Hooker - Rush Chairman
- John C. Nowell - Steward
- Dave Garrison - House Manager

Fall Pledge Class

Fifty-seven new novices at EH were formally pledged to ΣN on 2 October, 1965. Everyone had different reasons why he selected (or was selected by) ΣN .

The chapter followed the technique of emphasis on academics used successfully the year before. The trophy for *Most Improved Academic Fraternity* was prominently displayed on the mantle, and the Spring academic rankings were posted on the bulletin board with ΣN on top and highlighted in yellow. The story was that our chapter was chronically undermanned until they realized that members have to make their grades to have surplus time to devote to chapter activities. A simple idea, but it worked.

The chapter was very aggressive in Summer Rush in Memphis - especially in Whitehaven - and this resulted in 21 pledges from that area. Many accepted bids early and wearing a gold ribbon on their name tag helped to convince others to come on board. Our numbers swelled past the small group of actives - only 35 on hand including just 15 upperclassmen - and made it clear that the pledge class would soon dominate the fraternity.



We were rushed at the old house on 17th Street which would be torn down the next year to make way for the Humanities Building. A new fraternity park was under construction in the urban renewal area beyond Stokley Fieldhouse. Since most fraternities were building new houses, ΣN 's old place was less of a liability, and we were shown a model of the new house (made by Mike Gritzner) that looked far grander than it turned out to be.



Sigma Nu lacked the social standing to attract the upwardly aspired or the politically motivated. Our pledge pin did not open any doors, and the sororities weren't lined up to work with us for All-Sing or Carnicus. Our reputation came later when we built it ourselves. Our social limitations may actually have been a strength since we were diverse long before that was Politically Correct. No one would

accuse our pledge class of being a bunch of clones that all dressed and acted alike. A few came to the group because of family ties or because of ΣN's reputation at other schools.

Our pledge class was heavy on technical majors: 17 engineers, 6 scientists, and a couple of architects. Pre-law and pre-med were also popular, but many turned out to be in pre-business.



Hank Stanfield was our Pledge Marshall and a pretty good one. He taught us respect for the traditions of the fraternity and scared us into doing things that were good for the group even when it required individual sacrifice. We were never hazed but we all learned to sing the pledge song.

Pledge class officers were Terry Talbot, Tad Zelski, Harry Workman, Kirby Hamilton, Rod Witlock, Phil Harmon, and Chip VorderBruegge. Terry was the first pledge class president in several years to make his grades on the first try.

In all, thirty of us made our grades and continued on to be initiated into the fraternity on 15 January, 1966, at the Congregational Church in Knoxville. The class had the highest average on campus. Would you believe that 2.17 was considered great?

Winter/Spring Pledge Classes

Success follows success. We had strong pledge classes throughout the year. Some were holdovers from the fall, and some were friends of new members. One of the requirements for the fall class was to drag in a prospective rushee, and several of

them signed on. Two brothers made their grades on the second attempt.

The Winter Pledge class won the hearts of the Freshmen girls at Cumberland dorm with a huge valentine. The Winter class also had the highest grade average on campus.

While there isn't much detail on these groups, 17 more brothers were initiated in 1966, bringing the total for the year to 47. It is this group that defines the scope of this directory.

Highlights of the year

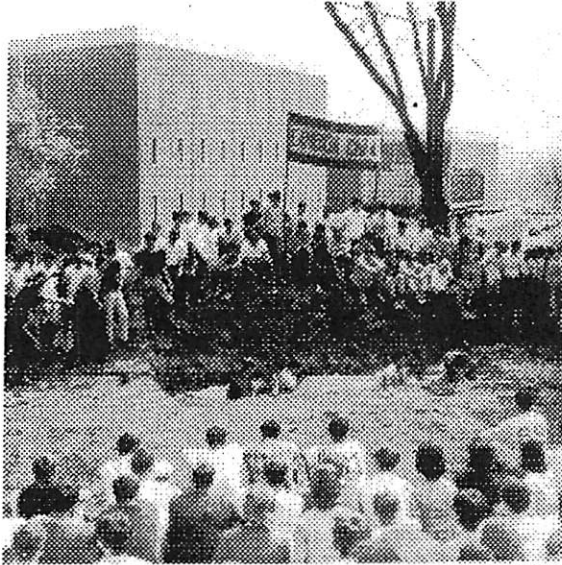
Everyone will have their own special memories of the 1965-66 school year, but here are a few major ones:

Spirit of the Hill Competition - ΣN retires the trophy as the competition melts away under our creativity and energy. Wade Pemberton played the Ga Tech Yellowjacket on the 50 yd line until 'swatted' with a walking can of big orange raid. We dribbled a basketball all the way to Kentucky. We ran onto the basketball court wearing red (high school) Bulldog uniforms doing patty-cake warm-ups before the UGA game. We hung a huge banner off the humanities building.



Football season - Vols go 9-2 including a trip to the Bluebonnet Bowl in Dallas. Pep rallies & group seating. EH won football skins from the ΣN chapters at Georgia Tech and UCLA. Who could forget the UCLA "rosebonnet" game, 37-34?

Greek Competition - We won the Swimming Trophy, placed 2nd in All-Sing (men's intermediate group - singing *Girl from Ipanema*), 1st at the Indoor Relays, 1st in Softball, and 1st in College Bowl. In the mother of all upsets, ΣN defeated heavily favored AΓP in the Lambda Chi Tug of War.

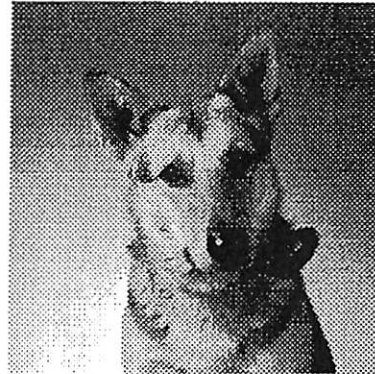


Party Times - According to the record, we had a Pledge Dance, Cowboy Party, "little homecoming" party, and an Avanti House Party during Fall Term. The pledge dance was up in the mountains at Tuckalceche Barn.



Meals - While the brothers entered the dining room by pen number, the pledges had to wait for the end of the line. The exception was if you had a date. Some people always managed to find a date so they wouldn't have to eat leftovers in the back room. Our cook's name was Ophelia, and she did wonders with the low grade food that our budget afforded.

Volkstote - Believe it or not, we actually talked a car dealer into loaning us a VW for a fraternity car carrying contest. Teams of 14 men carried the car 100 yards and then everyone crammed into the car while it was driven back to the starting line. ΛXA won, and the VW dealer lost as several teams dropped the car. No one was seriously injured.



Legion - We had a mascot, a big old German Shepherd named Legion that had the run of campus. He attended classes and was widely recognized. He guarded the house against all infidels.



Was this our Homecoming Display, or just another Spirit of the Hill effort for the Georgia Tech game? The Raid can was used on the football field and placed on the roof later.